



UEMATSU
PROPERTIES
上松不動産

LICENSED REAL ESTATE AGENT



928&930/187 Kent Street Sydney NSW

2 🏠 2 🚿

Positioned in the heart of Sydney's CBD, this rare dual-key apartment in Kent Street presents a compelling opportunity for investors seeking strong rental returns or buyers looking for flexible living arrangements.

Offering a smart dual-key configuration, the property comprises a well-designed one-bedroom, one-bathroom layout, allowing for dual income potential or the option to live in one and lease the other. Designed for functionality and low-maintenance living, the interiors maximise space and natural light, delivering comfort and practicality in an ultra-convenient location.

Located moments from Barangaroo, Darling Harbour, and

[For full version visit the website](https://www.uproperties.com.au)

Type : Unit
Price : Expression of Interest
Building Size : 132 sqm
View : <https://www.uproperties.com.au/8704350>



Kazu Uematsu
02 9953 3268



Oliver Nagase
02 9953 3268

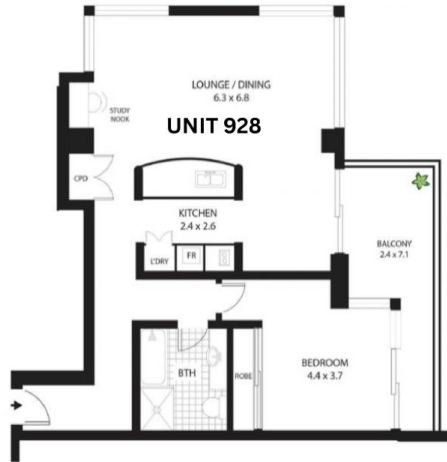
<https://www.uproperties.com.au>

Shop 10, 99 Military Road, Neutral Bay NSW 2089
info@uproperties.com.au 02 9953 3268

COMBINED FLOORPLAN



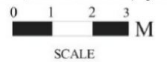
UNIT 928



UNIT 930



928&930/187 Kent Street, Sydney



All measurements are approximate only.
 Plan is provided as an indication of layout